



NOTTS. EDUCATION COMMITTEE



The
HENRY MELLISH
COUNTY SECONDARY
SCHOOL *for* BOYS

To be opened by
MISS MELLISH



4th OCTOBER
1929

Order of Proceedings
at the OPENING of
**THE HENRY MELLISH COUNTY
SECONDARY SCHOOL FOR BOYS**
on Friday, 4th October, 1929

Guests will enter the School by the side entrances and assemble in the Hall by 2.40 p.m.

At 2.45 p.m. the Governors, together with the Chairman of the County Council, the Chairman of the County Education Committee, the Chairman of the Higher Education Sub-Committee, Canon Sawyer, the Director of Education, the Headmaster of the School and the County Architect, will receive Miss Mellish at the main door. After opening the door, Miss Mellish will unveil a Memorial Tablet in the vestibule. The party will then proceed to the Hall.

The Chairman of the Higher Education Sub-Committee,
Alderman W. H. Mason,
will take the Chair.

The Chairman of the County Education Committee,
Alderman T. L. K. Edge, V.D., D.L.,
will formally hand over the School and its management to the Governing Body.

The County Director of Education,
B. W. L. Bulkeley, Esq., B.A.,
will briefly state the history and aims of the School.

The Rev. Canon H. A. P. Sawyer, M.A.
(*Headmaster of Shrewsbury School*),
will deliver an address.

A vote of thanks to Miss Mellish and Canon Sawyer will be proposed by the Vice-Chairman of the Governors and seconded by the Headmaster.

The Building will be open to inspection after the ceremony.

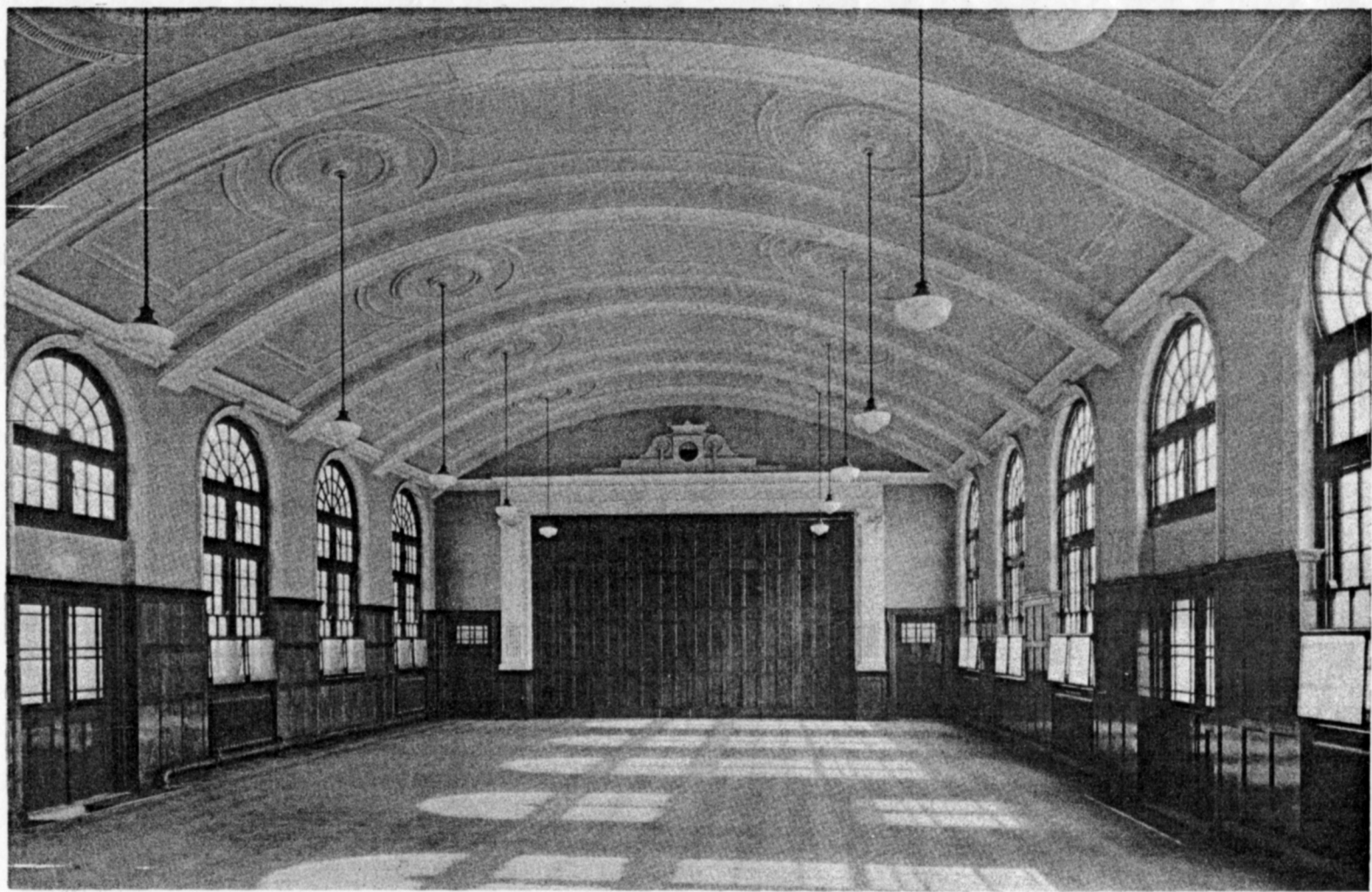
The
HENRY MELLISH COUNTY SECONDARY
SCHOOL FOR BOYS

Governing Body :

| | |
|---|---|
| <i>Notts. County Council :</i> | G. H. HURT, (<i>Chairman</i>). G. PEACH (<i>Vice-Chairman</i>). MAJOR T. P. BARBER, D.S.O. W. HARLOW. T. H. HARPER, PROF. A. W. KIRKALDY, M.A. |
| <i>Basford R.D.C. :</i> | G. F. JORDAN. |
| <i>Nottingham City Council :</i> | G. GOODALL. |
| <i>Hucknall U.D.C. :</i> | G. H. GREEN. |
| <i>University College, Nottingham :</i> | PROF. H. A. S. WORTLEY, M.A. |
| <i>Co-opted Members :</i> | W. MELLORS. G. E. TAYLOR. |

Staff :

| | |
|----------------------------|---|
| <i>Head Master :</i> | T. O. BALK, M.C., M.A. |
| <i>Assistant Masters :</i> | K. McEWEN. E. A. BURNHAM, B.A. A. K. DALLAS. R. GILL, B.A. G. E. GOODALL, B.Sc. S. MARSHALL, M.A., S. REVILL, M.A. T. E. SMITH, B.Sc. J. C. WREN, M.A., B.Sc. |



ASSEMBLY HALL.

THE HENRY MELLISH COUNTY SECONDARY SCHOOL *for* BOYS

THE decision to erect the School was the outcome of two surveys of facilities for Secondary Education undertaken in 1920 and 1924 by the Director of Education on the instructions of the County Education Committee. The surveys revealed an inadequate provision of Secondary School places in the area round Nottingham, and the Committee accordingly decided to obtain a site for a Secondary School in the northern portion of the city and to prepare plans for a Mixed Secondary School at West Bridgford. The Bulwell site of 9.32 acres was purchased from the Duke of Newcastle in 1920.

A Conference was held between representatives of the County and City Education Committees in February, 1922, at which it was agreed to recommend that co-operative provision should be made for supplying the deficiencies of both Authorities in Secondary School places by the ultimate erection of four large Secondary Schools, the first step to be the building of a boys' school by the County Authority and a girls' school by the City Authority. The plans for carrying out the proposals were delayed by the "economy" period initiated by the Board of Education in 1921, and it was not until 1924 that further building schemes could be undertaken. In January, 1925, the County Committee decided that plans should be drawn for a School for 450-480 boys, to be erected on one end of the Bulwell site. The preliminary plans were approved by the Board of Education in August, 1925, and the complete plans were submitted for approval in March, 1926; they were finally approved in June, and early in 1927 tenders were invited for the erection of the building.

AT this time it was contemplated that a similar school for girls would be erected at the Brooklyn Road end of the site and that one Dining Hall would serve the two schools. Since the original scheme had been prepared, views as to the provision of playing field accommodation had undergone revision, and it was thought that the site would not be large enough for two schools and playing fields. Consequently negotiations were begun for the acquisition of a second site in the neighbourhood, where the Girls' School could ultimately be erected. Various causes have operated to delay these negotiations, which have not yet been completed. It is, however, tolerably certain that a site of over seven acres will be acquired, and that in the near future there will be accommodation for 1,000 boys and girls in the Henry Mellish Schools.

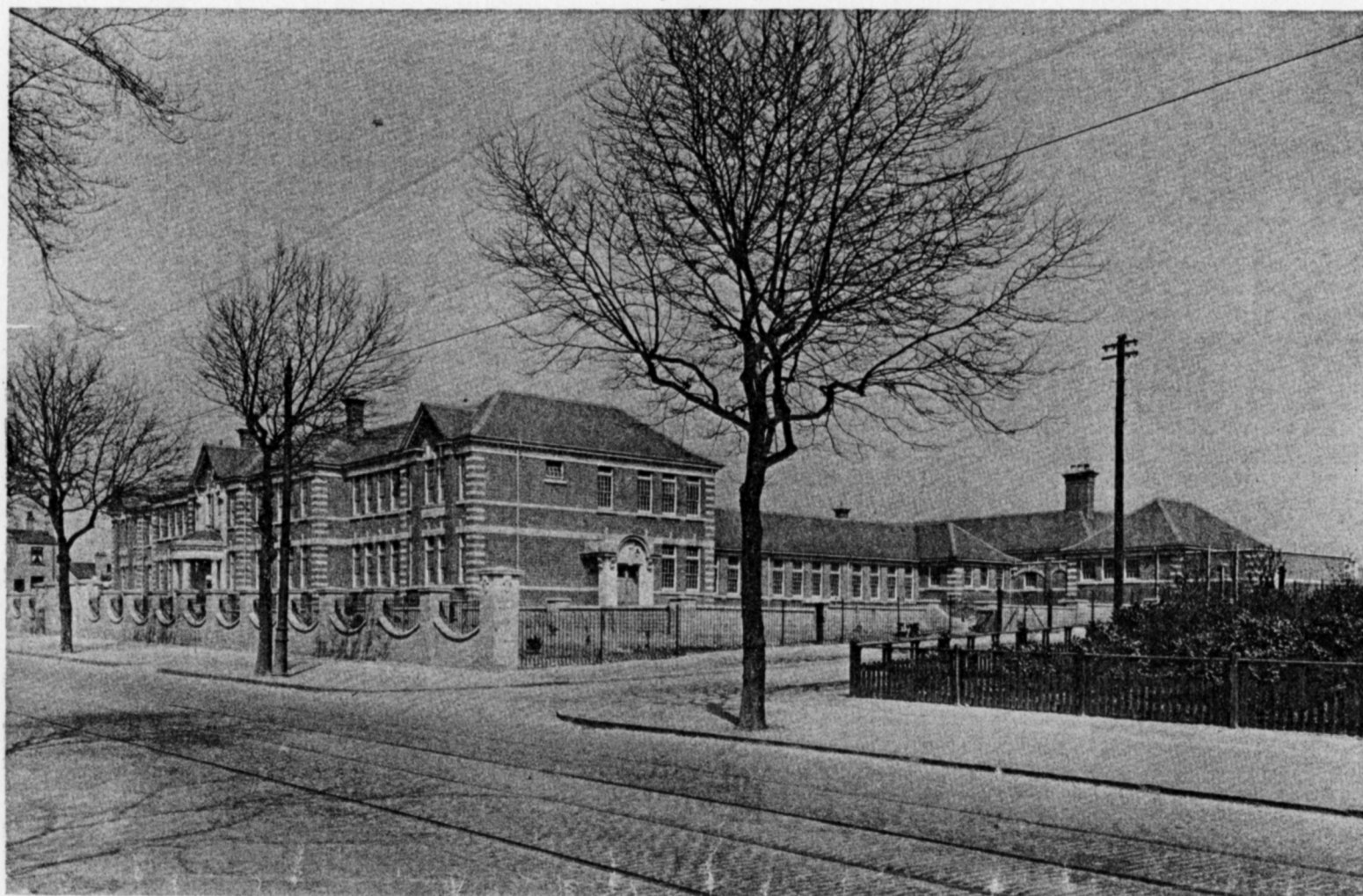
IN February, 1927, the Committee accepted the tender of Messrs. Henry James, of Mansfield, amounting to £43,897 for the erection of the Boys' School, and the combined Dining Hall. It was finally decided to defer the building of the Dining Hall, estimated to cost £5,580, until the question of the erection of the Girls' School had been further considered, and it has therefore been found necessary to make temporary arrangements for dining in the School Hall. Building operations began in March, 1927, and by December, 1928, had reached such a stage that the installation of equipment could be begun. The Committee therefore resolved to arrange for the opening of the school in the Autumn term of 1929, and to appoint the Head Master early in the year so that he might give advice in the provision of equipment and the appointment of the assistant staff. From a large field of candidates for the post, Mr. T. O. Balk, M.C., M.A. (Oxon.), was selected, and he took up his duties in April, 1929.

THE Committee resolved in 1927 that the new Secondary Schools at Bulwell should be named after Col. Henry Mellish, C.B., who had been Chairman of the Education Committee since its inception in 1903, and that the schools should contain a permanent record of his eminent services to the cause of education in the county and country.

Consequent upon the opening of the Boys' School a decision was taken to close the temporary Secondary School which had been carried on at Hucknall. The boys from Hucknall have been transferred to the new school and the girls to West Bridgford. As the latter school was already full, accommodation was provided by transferring to the Henry Mellish School boys attending the County Secondary School, West Bridgford, but living in districts which the new school serves.

THE Henry Mellish County Secondary School opened for work on Tuesday, 17th September, 1929, with 214 boys drawn from both county and city, of whom 91 were first year scholars. As this is a normal year's entry, the school should be full in three years' time.

The total cost of the School, including equipment, slightly exceeds £50,000.



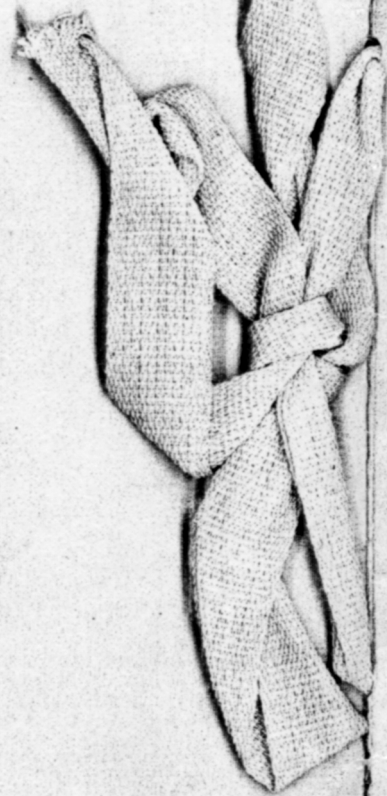
GENERAL VIEW OF SCHOOL.



FRONT ENTRANCE.

Contractors :
HENRY JAMES (Junior),
Mansfield.

County Architect :
L. MAGGS, F.R.I.B.A., F.S.I.



H. JONES & SON,
PRINTERS,
NOTTINGHAM.